



PRAIRIE MOUNTAIN HEALTH
SANTÉ PRAIRIE MOUNTAIN

Request for Pricing

Gilbert Plains Personal Care Home

2024-020

Prairie Mountain Health

PMH is requesting pricing from qualified roofing contractors to remove and replace shingles on the Gilbert Plains Personal Care Home and Maintenance Garage located at 100 Cutforth Street North, Gilbert Plains, Manitoba

Scope of Work:

- Complete stripping, removal and disposal of existing shingles
- Supply and install Laminate 30-year BP Mystique Shingles
- Supply and Install shingle starter strips
- Supply and install Synthetic Underlayment
- Supply and Install Eaveguard (Min 2 rows on eaves)
- Supply and Install Omni Roll Ridge Venting
- Supply and Install plumbing flanges
- Supply all associated materials and labour required to complete the installation
- Provide proof of being in good standing with the Workers Compensation Board of Manitoba.
- Provide proof of Commercial General Liability insurance with a limit of no less than two million dollars (\$2,000,000).

SITE ACCESS

For tender questions please contact

Chad Gudbjartson

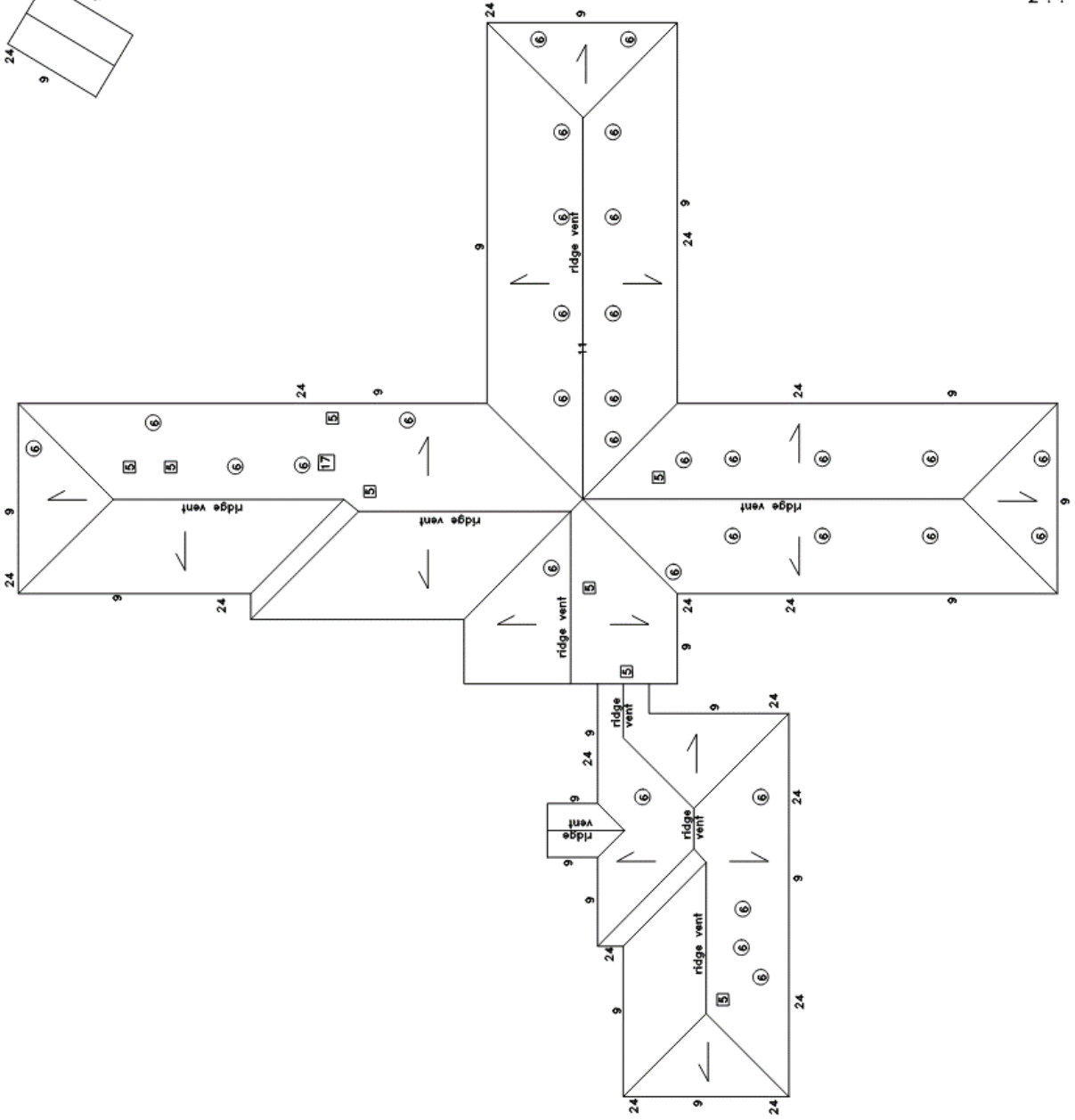
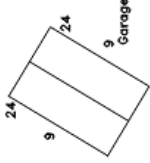
204-572-5638

cgudbjartson@pmh-mb.ca

Bid Submission

Bids to be submitted electronically to cgudbjartson@pmh-mb.ca

Bids to be received by 12:00 PM on May 8, 2024.



Notes:
 .01 Contra:
 .02 Drawin:
 11-11-11